

How to check your equipment is plugged in correctly.

Every Evolution Wireless connection has an external antenna which connects your property to our high-speed network.

This guide will show you how to check everything is plugged in correctly.

Below are some images of the equipment you will be checking.

POE Injector

These may be black or white depending on your equipment.
The power cable connecting the POE Injector to the power will be the same across the two.



Router

If supplied by Evolution Wireless this will be TP-Link branded and comes in a couple of different models.

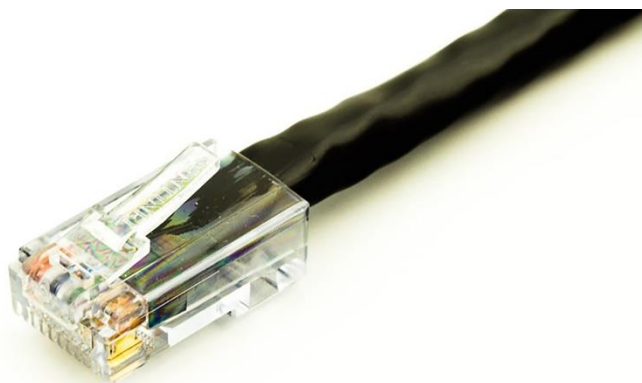
If you have provided your own router then the same general idea to plugging in applies.



Now that we have identified the equipment you need to be looking for, we will proceed with making sure everything is plugged in correctly.

- 1) Make sure that your POE Injector is plugged into the wall and has a small light on the top. If this does not have a light, try another power point to identify if that power point is faulty or if the POE Injector may be faulty.
- 2) Make sure your router is Plugged into power and there are lights on top lit up, If there are no lights lit up check the back of the router to see if there is a power button and turn on if there is.
- 3) Once there are lights lit up on both the POE and the router proceed from here.
- 4) Next step is to locate the Black Ethernet cable that comes into your house from the external antenna/dish outside your house.

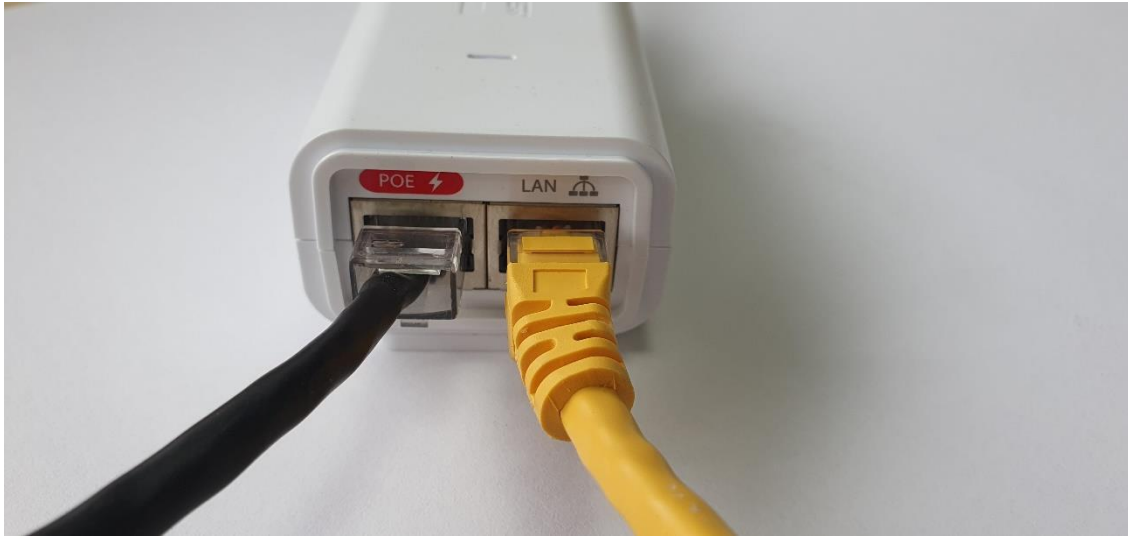
The end of this cable will look like this:



- 5) Plug this cable into the POE port on the front of the POE Injector.
- 6) Next you will need to locate the ethernet cable. This cable will usually be Yellow, Grey or white but could be any colour, and should look similar to this:



- 7) One end of this cable will plug into the LAN port on the POE Injector.
- 8) The other end will plug into one of the Orange/Yellow Ports on the back of the Router.
See Below:



- 9) Once everything is all plugged in as pictured you should be all good to use your Evolution Wireless Ultra-Fast Broadband connection.